

# Willoughby Stainless Fountains



## WOBF-1RM-FA Series Stainless Steel Rear Mounted Front Access Bottle Filler

### Standard Features

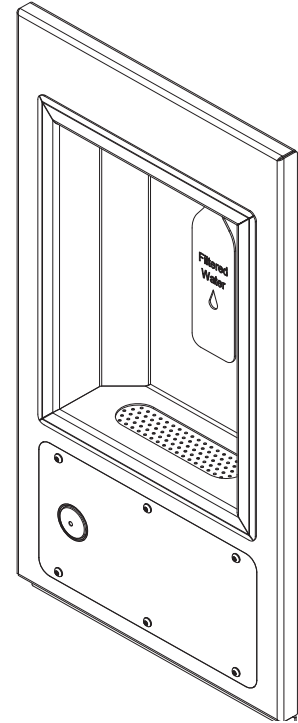
Stainless Steel, Rear Mounted, Front Access, Bottle Filler shall be:  
Willoughby Model No. **WOBF-1RM-FA**.

Model **WOBF-1RM-FA** bottle filler shall be constructed of a vandal resistant 304 stainless steel, with a removable bottom panel.

Filler spout shall be activated by a solid stainless steel pushbutton assembly which controls a lead-free, self-closing valve. Pushbutton operation shall require less than 5 lbs. of force to activate.

Model **WOBF-1RM-FA** bottle filler shall be lead-free and in compliance with ANSI/NSF 61, Section 9 requirements.

Anchoring shall be by z-clip at the top of the fixture and internal wall mounting holes at the bottom of the fixture. Anchoring hardware is to be provided by others.



### Recommended Specifications

- \* Simple, vandal-resistant pushbutton
- \* Quick, 1-gallon-per-minute fill rate
- \* Standard heavy duty type 304 14 Ga. stainless steel
- \* Solid stainless steel vandal resistant anti-rotation filler spout
- \* Replaceable in-line charcoal filter on inlet water supply
- \* Promotes use of environmentally friendly refillable bottles, reducing use of disposable bottles
- \* Compliant to ADA reach height guidelines
- \* Removable bottom panel
- \* Powder coat finish (color options on page 2)

To specify fixture and options, use the Model Number and Options page.

Example: To specify a WOBF-1RM rear mounted front access bottle filler with single temp non-metering valve, recessed pushbutton, and in Silver color.

Use the following Willoughby Model Number: WOBF-1RM-FA-RPB-SL



**WARNING:** Cancer and Reproductive Harm

- [www.P65Warnings.ca.gov](http://www.P65Warnings.ca.gov)

visit our website at [www.willoughbystainlessfountains.com](http://www.willoughbystainlessfountains.com)

5105 West 78th Street • Indianapolis, IN. 46268  
(317) 875-0830 • Fax: (317) 875-0837 • (800) 428-4065



MADE IN THE U.S.A.

**WSF2-17**

## MODEL NUMBER AND OPTIONS:

### 1.) Type:

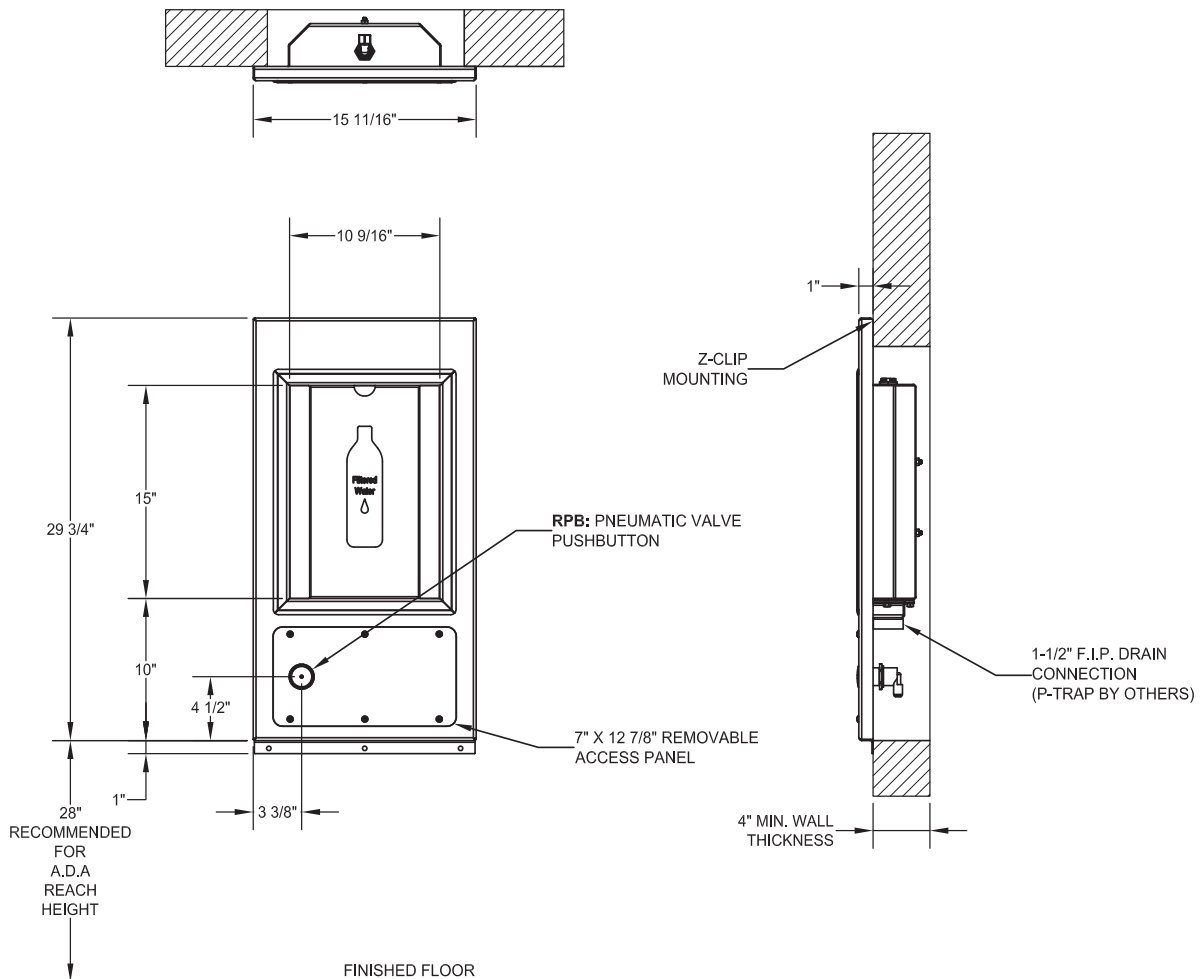
- ☐ WOBF-1RM-FA-RPB      Stainless Steel, Rear mounted,  
Front Access, Bottle Filler

### 3.) Colors (select one):

- ☐ SL      Silver  
☐ G      Green  
☐ R      Red  
☐ BL      Blue  
☐ O      Orange  
☐ V      Violet  
☐ Y      Yellow  
☐ BR      Brown  
☐ BK      Black  
☐ BE      Beige  
☐ W      White  
☐ YG      Yellow Green  
☐ LBL      Light Blue  
☐ GT      Graphite (Textured)  
☐ MTW      Matte White

Approved For Manufacturing By: \_\_\_\_\_ Date: \_\_\_\_\_ Company: \_\_\_\_\_  
 Wall Thickness: \_\_\_\_\_ Wall Type: \_\_\_\_\_

VERIFY ALL DIMENSIONS WITH FACTORY PRIOR TO ROUGH-IN  
 WILLOUGHBY RESERVES THE RIGHT TO MAKE CHANGES IN DESIGN AND  
 DIMENSIONS WITHOUT FORMAL NOTICE AND WITHOUT INCURRING OBLIGATION.



visit our website at [www.willoughbystainlessfountains.com](http://www.willoughbystainlessfountains.com)

5105 West 78th Street • Indianapolis, IN. 46268  
 (317) 875-0830 • Fax: (317) 875-0837 • (800) 428-4065



MADE IN THE U.S.A.